

The Glen Mhor Lodge, £225,000

the
pastures
at Cartmel



INTERIOR

Vaulted ceilings throughout the lodge

Wallpapered throughout

Statement wall to hallway

LPG Gas Combi central heating with contemporary radiators throughout

Smoke alarms and carbon monoxide detectors

Solid oak internal doors and chrome handles

Carpet throughout lodge

Camaro flooring to kitchen and bathrooms

Underlay fitted to all carpets

Roman blinds to side windows of lounge and bathrooms

Lined curtains to the front gable of the lounge and master bedroom

Roman blind to the second & third bedroom

Modern kitchen with contrasting units, doors and worktop (specification layout upon request)

Integrated, branded appliances including:

600 dishwasher, integrated washing machine, 50/50 integrated fridge freezer, gas on glass hob, single built-in oven and microwave, black granite sink and chrome tap

Contemporary furniture pack to lounge and dining area includes: suite, dining table and chairs, coffee table and fireplace

Beds, mattresses, headboards, duvets, pillows, duvet covers and pillow cases to all bedrooms

Walk-in wardrobe/dressing area in main bedroom also dressing table, mirror & bedside cabinets

Wardrobe and bedside cabinet to second and third bedroom

En suite includes:
800mm shower enclosure, vanity top basin with mirror above and hidden toilet cistern

The main bathroom includes: corner bath and panel, vanity top basin with mirror above and square toilet

EXTERIOR

CanExel® cladding in a choice of 17 colours or timber clad

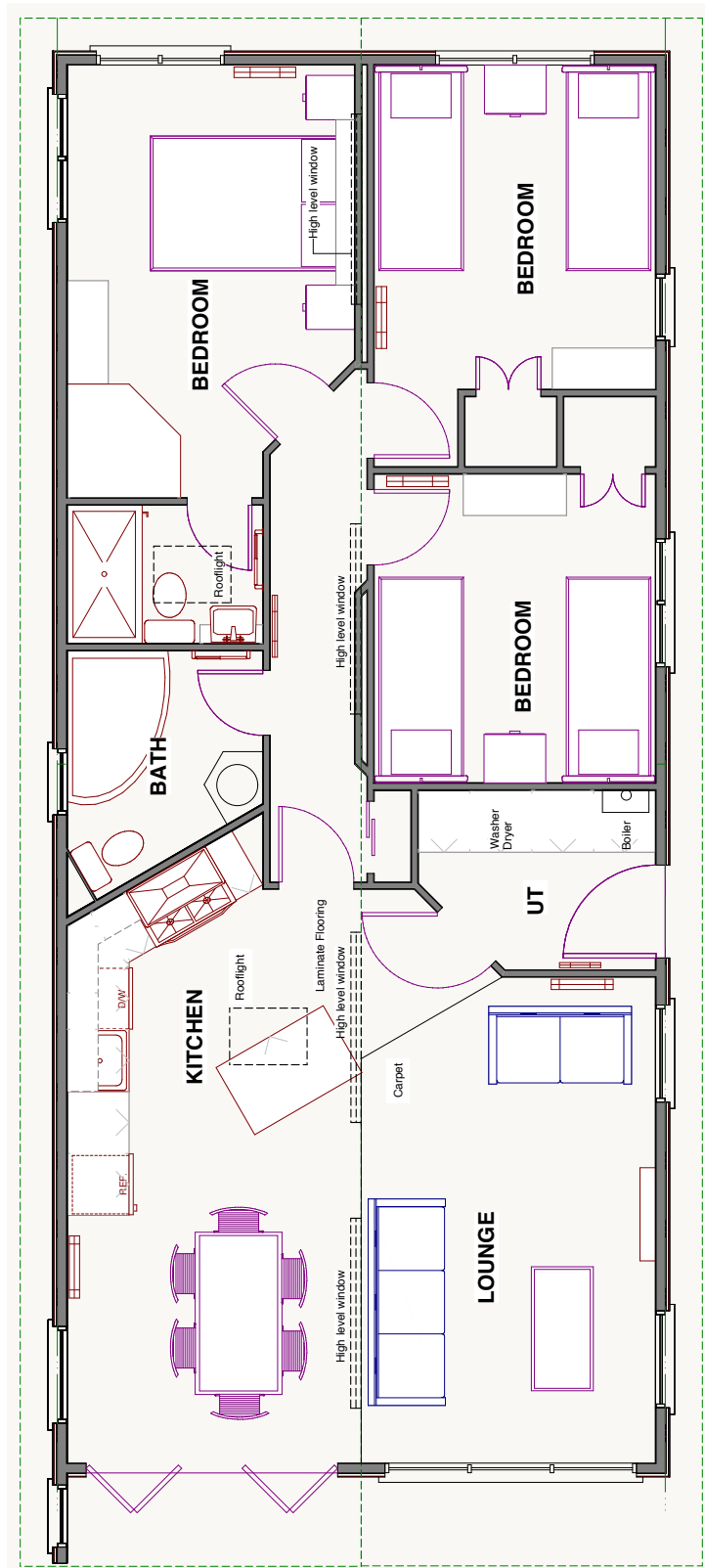
Pitched roof

Floor to ceiling windows to front end

Bi-fold doors to front end of lodge

For more information please contact Andy Cotter on: T: 015395 34252 | M: 07970 779329
email: andy@thepastures.co.uk

The Glen Mhor Lodge, £225,000



For more information please contact Andy Cotter on: T: 015395 34252 | M: 07970 779329
email: andy@thepastures.co.uk